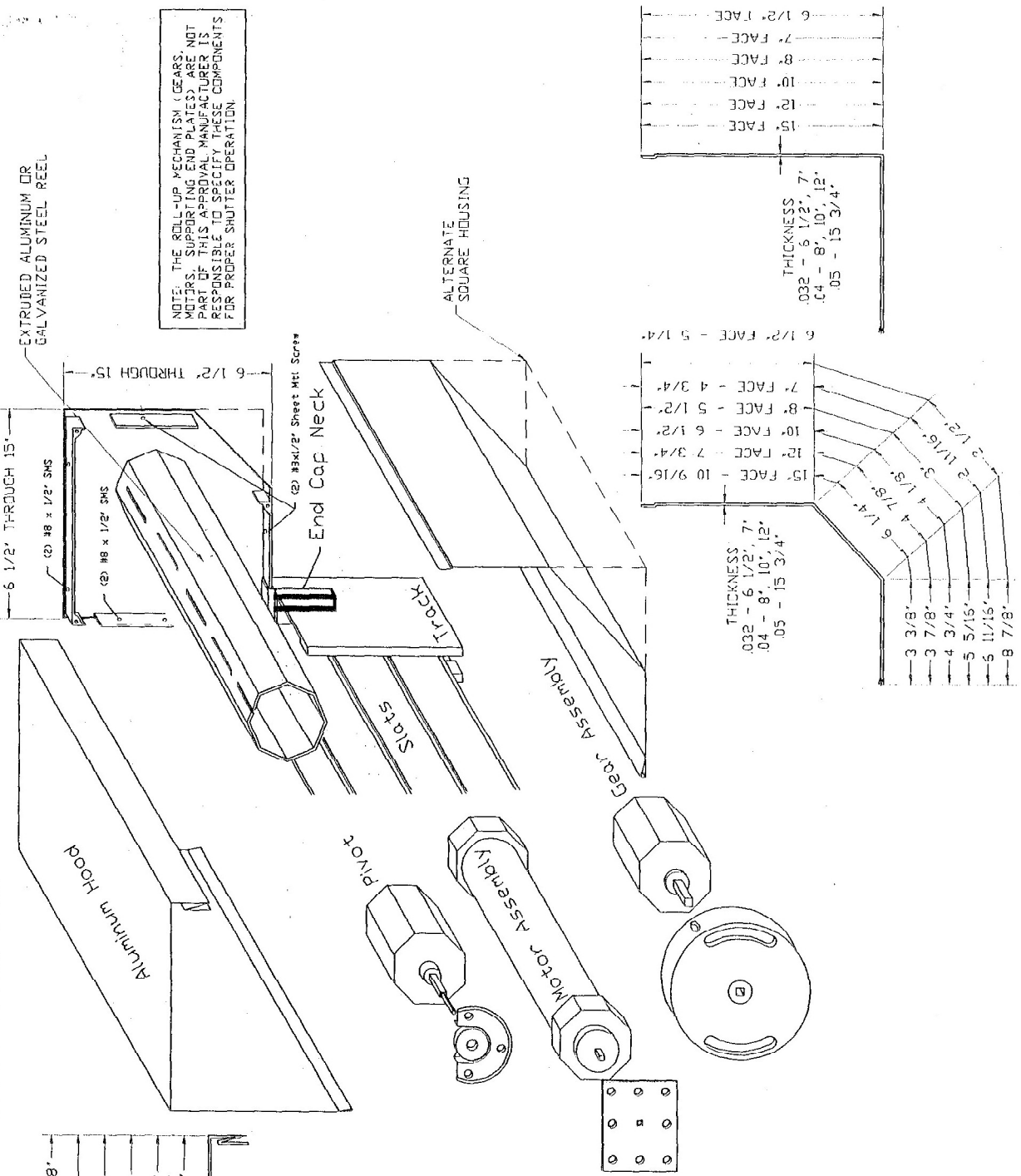


HOOD ASSEMBLY

6 1/2' HOOD	- 6 3/8"
7' HOOD	- 7"
8' HOOD	- 8"
10' HOOD	- 9 7/8"
12' HOOD	- 11 7/8"
15' HOOD	- 15 5/8"

THICKNESS
 .032 - 6 1/2", 7"
 .04 - 8", 10", 12"
 .05 - 15 3/4"



NOTE: THE ROLL-UP MECHANISM (GEARS, MOTORS, SUPPORTING END PLATES) ARE NOT PART OF THIS APPROVAL. MANUFACTURER IS RESPONSIBLE TO SPECIFY THESE COMPONENTS FOR PROPER SHUTTER OPERATION.

Manufacturer:
Florida Blinds & Shutters, Inc
 1271 LAQUINTA DRIVE, SUITE #5
 ORLANDO, FL 32809
 Tel.: (407) 850-9998
 Fax.: (407) 856-0977

Product:
ADVANCED ROLL SYSTEM
 ROLLING SHUTTER

Engineering:
EngCo Inc.
 CA 8116
 6971 W. Sunrise Blvd. 104
 Plantation, FL 33313
 Tel.: (954) 585-0304
 Fax.: (954) 585-0305

A

AUG 04 2006
 Engineer: Seel
 Padre De Figueroa
 PE 32609

DRAFTING:
PK DRAFTING & MORE

Date: 08/04/06
 Scale: NA
 Design by: PPMF

Drawing Number
06-231

Sheet
 4 of 4